





**CONQUER:** The figure moves to a field that is empty (no one has conquered the field yet) so the player has the opportunity to conquer this field answering a question for the CONQUER deck. If the answer is right, the player puts a game token in the field.

**ATTACK:** The figure moves to a field that contains a game token from other player so the player has the opportunity to get this field by answering a question for the ATTACK deck, medium difficulty. If the answer is right, the player removes the game token from the other player and puts his own token.

**DEBUG ZONE:** These fields are penalty fields that cannot be conquered. The player has to answer a question from the deck of Debug Zone, highest difficulty. In case of correct answer in the next round you continue, in case of wrong answer the player stays in the field. If the player answer three times incorrectly, he can continue with the game in the following round.

**WIFI FREE:** This field can be conquered without answering any questions. If the field has been already conquered, the player attack it without question, so the player removes the other players token and put its own token.

**TELEPORT:** From this field the player can switch to any field to conquer or attack except WIFI FREE fields.

**HACKER:** This field is a penalty field that cannot be conquered. The player loses one game token from the fields it has already conquered or attacked. The player choose the field he prefers to be lost.

**JOCKER FIELD:** This field has several uses: Once a player sets in this field, he gets one Joker Card. This card has two possible options shown with different icons:

- **Security card:** Keep it in order to use when you set in a Debug Zone field in order to avoid questions.
- **Fire card:** You can keep this card and use it to remove the tokens of other players around your figure position.
- One a player sets in this field can choose the direction of the next figure position between the two possible options shown in the arrows (right and left)



### Assessment in the game

During the game, the player has to be answering questions and depending on the situation, you have to answer:

- A Conquer or basic level questions
- An Attack or medium level
- A Debug zone or high level question

Each player has to save each question answered, the right answered and the wrong answered. So, at the end of the game, each player has a deck of right cards and a deck of wrong cards. Each card has a difficulty level color and a competence icon.



Funded by the European Union. Views and opinions expressed are however those of the author(s) only and do not necessarily reflect those of the European Union or the European Education and Culture Executive Agency (EACEA). Neither the European Union nor EACEA can be held responsible for them.

Infinity.Net



## ∞ Target

The winner is the player who gets all its game tokens in the fields of board.

Each player has 8 game tokens, different tokens colors for different players and the user will be able to get fields with the tokens once it will answer some questions.

## ∞ Elements in the game

A board with a predefined path by the arrows drawn on it and 41 fields in the infinity symbol shape with the following symbols:

32 fields for conquer or attack



2 Wifi Free fields



4 Debug Zone fields



1 Teletransport fields



1 Hacker field



1 Joker field



8 game tokens and 1 figure game per player.  
1 leaflet with Apps Icons in order to help players to answer.

- 3 conquer card decks with questions level 1, the basic ones. One deck per competence with 15 cards per desk. Each competence has its own icon.



- 3 attack card decks with questions level 2, the medium difficulty ones. One deck per competence with 15 cards per desk. Each competence has its own icon.



- 3 debug zone decks with questions level 3, the more difficulty ones. One deck per competence with 10 cards per desk. Each competence has its own icon.



- 8 Joker cards



- 1 dice

## ∞ Questions

The questions are related to IT concepts divided into three competences, each of them with its own icon:

- Safety 
- Information and data literacy 
- Problem solving 

There are also three levels of questions for each competence, depending on the difficulty: level, medium, high.

The questions can be classified in three types depending on the type of answers:

- True / False questions
- Single: The user has to choose the right one depending on the instructions.
- Icon choice: There are also questions about apps or technologies that can be answered in words or using the leaflet as a helping tool.

## ∞ Preparing the game

Each player has 8 game tokens and 1 figure with the same color.

In the board there will be only three card decks:

- Conquer Card Deck: shuffling the 3 conquer card decks we create only one deck. This deck is for basic level questions.
- Attack Card Deck: shuffling the 3 attack card decks we create only one deck
- Debug Zone Card Deck: shuffling the 3 debug zone card decks we create only one deck

## ∞ Starting the game

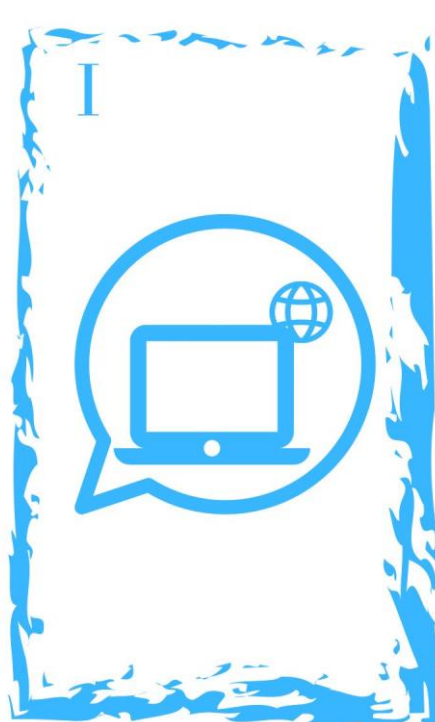
All the players starts with their figure game in the center of the infinity board.

The players start rolling the dice to see who gets the higher points. The higher points starts the game and then turns go clockwise.

The figure will be moved once rolling the dice. From the center they can choose two ways to go with the figure: right or left and then, the direction is predetermined by the arrows.

Once a player rolling the dice, moves to the new field and could happen the following scenarios:

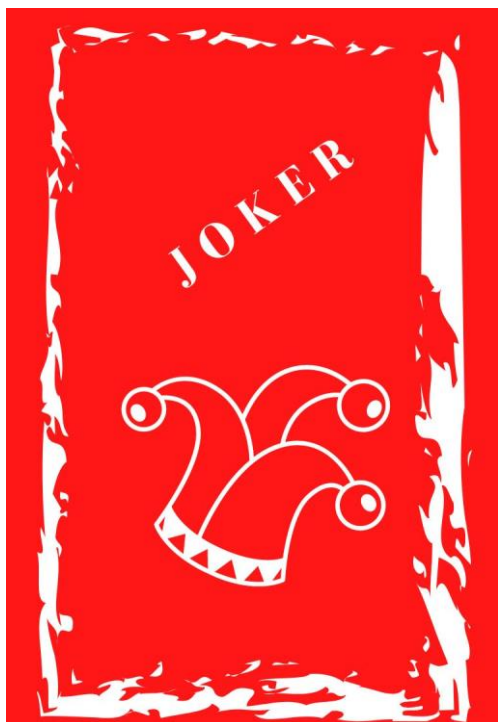












"Funded by the European Union. Views and opinions expressed are however those of the author(s) only and do not necessarily reflect those of the European Union or the European Education and Culture Executive Agency (EACEA). Neither the European Union nor EACEA can be held responsible for them."



**Co-funded by  
the European Union**





I





**1.**

**If I ask my dentist to  
erase all my personal  
data, they must  
delete all the  
existing data they  
have on me.**

**True**

**False**





**2.**

**Can social networks  
create addiction?**

**Yes**

**No**

**3.**



**The dead batteries for the TV remote are accumulating in a drawer and I decide to get rid of them. What do we do?**

- a) I can perfectly place it in the same container as common waste.**
- b) I don't have a specific container in my street to throw them away, and I leave them in a plastic bag along with the rest of the containers.**
- c) I keep it at home until I find a battery container.**



**4.**



**Credit card number is  
not considered to be  
personal data.**

**Yes**

**No**

**5.**



**Turning off the GPS  
function of your  
smartphone prevents  
any tracking of your  
phone's location.**

**True**

**False**

**6.**



**If you block tracking cookies in your browser, websites will be unable to track you.**

**True**

**False**



**7.**



**We should change our passwords regularly.**

**True**

**False**

**8.**



**13 years is the minimum age limit for opening a personal profile on most social networks.**

**True**

**False**

**9.**



**If you leave personal information/data on a social network, it will be removed forever when you delete your account.**

**True**

**False**



**10.**



**You had planned a vacation in advance and booked a flight. Just two weeks before it, a plane crashed and you have seen a lot of news about that. How do you feel about it?**

- a) I am scared and decide to cancel the flight**
- b) I am worried about the amount of negative news in the last two weeks**
- c) I am a bit worried, but think this is how news work**

**11.**



**Your nephew sends you an email with pictures from his last birthday party. How can you view them?**

- a) I click on the link in the email and view them online**
- b) I print the email**
- c) I start my printer and make sure that there is enough paper in it because they will be printed automatically**

**12.**



**A friend tells you that she has read on the internet that bees have become very aggressive because their beekeepers have been vaccinated. How do you react?**

- a) I am shocked and believe her, because I trust her. I ask her to send me the post so that I can also share it immediately**
- b) I trust her but don't say anything**
- c) I have my doubts but don't say anything**



**13.**



**You want to find an old school friend with a quite common name. How do you try to find her?**

- a) I type in her name and scroll through the results**
- b) I put her name in quotation marks ("Jane Doe")**
- c) I type her name into Facebook**

**14.**



**You need a new washing machine and want to buy the most cost-efficient device. After typing “new washing machine” into the browser, which link of the search result do you click?**

- a) always the first one, because that is the best result**
- b) the one with the most pictures**
- c) the links without an “Ad” tag**

**15.**



**You have searched for a doctor in your town. The next day you see an advertisement for Aspirin. In your opinion, is there a connection between these two events?**

- a) yes**
- b) no**
- c) I don't know.**



I



**1.**



**You need to write an  
online letter, which icon  
points to the email  
application?**

**2.**



**Which icon indicates a  
drawing program?**

**3.**



**You want to delete the  
received e-mail. Which  
icon will you use in your  
email?**

4.



**You want to make a  
video call. Which  
application will you  
choose?**

**5.**



**You have a problem  
with your Internet  
connection, which icon  
should you check?**



**6.**



**You want to connect with friends, family and other people you know. Share photos and videos, send messages. Which icon represents this social platform?**

**7.**



**Which icon indicates the program that would be most suitable for writing and processing documents?**



**8.**

**Which platform do you  
use to post short  
videos?**

**9.**



**Imagine you find a USB  
device in a coffee shop.  
Do you pick it up and  
plug in to see what's  
on the USB device?**

**Yes**

**No**

**10.**



**Show me an icon for the  
most secure social  
platform today?**

I





**1.**



**It's recommended always,  
for consuming purposes,  
to switch off the Wi-Fi  
routers when they're not  
in use:**

- a) Yes.**
- b) No.**
- c) Don't mind.**



**2.**

**Is it recommended to use the same password for all the platforms?? IE: Netflix, Amazon, Gmail...**

- a) No**
- b) Yes**
- c) Sometimes**



**3.**

**Someone is calling you to your personal phone saying it's a call from your bank. The first thing the caller does is to ask you for your personal ID. What's wrong here?**

**a) Nothing wrong. It's normal they need to know my ID to operate**

**b) Everything is wrong, the bank must know my ID before calling**

**c) I would love to give them my ID as well my Password/Key**

4.



**What makes a good password?**

- a)** Easy for you to remember but difficult for others to figure it out
- b)** It is long and usually consist of your name or surname
- c)** It is written in all capital letters and in blue

**5.**



**Bluetooth on is not a danger to the device.**

**True**

**False**

**6.**



**It is possible for your  
mobile phone to be  
infected with malware.**

**True**

**False**



7.



**Two-Factor Authentication (2FA) is only available for your bank accounts?**

**True**

**False**



**8.**

**Being granted access to a site after being given a code sent to your smartphone is the best example of multi-factor authentication.**

**True**

**False**

9.



**If a public Wi-Fi network (such as in an airport or cafe) requires a password to access, it is generally safe to use that network for sensitive activities such as online banking.**

**True**

**False**



**10.**

**You're online and you get a message from your Internet service provider asking for your password. They say they need it to fix your account. Should you give it to them?**

**Yes**

**No**

## II





**1.**

**You have searched for a doctor in your town. What kind of advertisement do you expect to see more frequently during the next days?**

- a) healthy food**
- b) shoes**
- c) medication**



**2.**



**You need a new washing machine. Because you want to buy the most cost-efficient device, how do you search?**

- a) I always take the first result because Google always gives me the best option**
- b) I look for a website making tests and comparisons**
- c) I compare the first three search results**

**3.**



**You want to find an old school friend with a quite common name. How do you try to find her?**

- a) I type her name and add the name of our school**
- b) I type her name and add the year she was born**
- c) I type her name and add the nickname she had at school**

**4.**



**A friend tells you that she has read on the internet that bees have become very aggressive because their beekeepers have been vaccinated. How do you react?**

- a) I have some doubts and decide to check the truthfulness later**
- b) I believe her and want to know more**
- c) I search for ways to protect my family**



**5.**

**You want to watch a movie on Netflix with your favourite actor (Keanu Reeves). How do you find one?**

- a)** I keep scrolling through the movie list on Netflix until I find it.
- b)** I look for “movies Keanu Reeves” on Google.
- c)** I ask my neighbour who is very good with movies.



**6.**

**For Saturday dinner you go in a new fancy restaurant and the waiter tells that, instead of the traditional menu on paper, they have a QR-code menu. What does it mean?**

- a) You can't order "a-la-carte"**
- b) They will serve you some Asian food**
- c) You can see the menu from your smartphone**



**7.**

**Show alternative  
search engine for  
Google:**



**8.**

**To see if a website is using a secure connection, what should you look for? Select all that apply.**

- a) A lock icon to the left of the URL**
- b) A star icon to the right of the URL**
- c) A plus sign (+) to the right of the tab**



9.

**The things you share  
on social networking  
sites like Facebook are  
generally more public  
than things you share  
over email or instant  
messaging.  
True False**



**10.**



**Users do not have the right to sue a service provider for using their personal data without their consent:**

**Yes**

**No**



**11.**

**Companies like Facebook  
and Google make profits by  
selling personal data to  
advertisers.**

**Yes**

**No**



**12.**

**Once we have given  
consent to use our  
personal data, we  
cannot control how it  
is being used.**

**Yes**

**No**



**13.**

**What is planned obsolescence?**

- a)** Time required to update the device
- b)** It is a computer program.
- c)** is the useful life of a product.



**14.**

**We find that our device does not support any more updates, so there are new applications that will not work. What should we do?**

- a) Change the device for a new one.**
- b) Do nothing.**
- c) Evaluate if with the applications that we have installed allow us to continue using our device.**



**15.**

**We observe that our device needs to be plugged in constantly because its autonomy has been reduced. What do we do?**

- a) Do nothing. We must adapt to the new situation of our devices.**
- b) Buy a new device.**
- c) Replace the battery with a new one.**

## II



**1.**



**Which platform would you  
use to write or read a  
letter in a foreign  
language you don't  
know?**



**2.**



**You can't see the screen  
because the letters are  
too small for you. What  
assistive tool would you  
choose to make them  
bigger and see better?**

**3.**



**You are a young cook  
and you want to learn a  
video with a new recipe  
on social media.**

**Which apps can you  
follow?**

4.



**You are sending an e-mail and want to add a file/attachment which icon should you use?**

**5.**



**You want to share the  
photos you took. Which  
icon will you use?**

**6.**



**You want to see when an  
object is located in the  
environment.**

**Wich application you will  
use?**

**7.**



**You want to mark that you  
like someone's post on the  
social network Facebook.  
Which icon will you use?**



8.

**Sign for Instagram is...?**

**9.**



**You see an ad for a clothing item on social media. If you go to buy it, which of the below is an indication that the website is safe to shop on?**

- a) It's a known, trusted, website**
- b) Number of likes on the ad or page**
- c) Hi resolution photos of the products**



**10.**



**If you are in a chat room and someone that you do not know asks you about personal information, what do you do?**

- a) Tell them just a basic information about yourself.**
- b) Don't ever give out any personal information.**
- c) First have them give you their personal information.**

II



**1.**



**You should ignore a message from a bank if they ask you to click on the URL to provide your internet banking ID, password and one-Time-Password (OTP) as they detected suspicious activity in your account. Otherwise, it will close your bank accounts immediately.**

**True**  
**False**

**2.**



**Is it safe to share  
confidential information  
from shared systems?**

**Yes**

**No**

**3.**



**What should you do before leaving any public computer, for example, in a library. Imaging you've just checked your emails.**

- a) Always close the session before leaving.**
- b) Do nothing, it will close automatically**
- c) It doesn't matter, they don't have my password**

**4.**

**What can be done in the case a commercial email is received from a company you're no longer interested in and that you don't want to receive more information from them?**

- a) Mark the email as SPAM.**  
All the emails then will be sent automatically to the SPAM folder.
- b) Delete each of the emails received.**
- c) Forward the email to the Police mail address.**

**5.**



**In terms of digital addiction, what of the following habits is healthy:**

- a) Eat in front of a screen.**
- b) Taking your laptop, tablet, or smartphone with you when you go to the toilet.**
- c) Switch off all your devices before sleeping.**

**6.**



**You want to buy a new laptop, and the stores has specific section stating, "Refurbished laptops".**

**What's the meaning of refurbished in that context?**

- a) Means second hand laptops.**
- b) It's more than a second-hand product: A refurbished item is a pre-owned product that's been evaluated, cleaned, repaired, upgraded (in some cases), and then resold.**
- c) Brand new laptops.**



**7.**



**When you perform a software update on your cell phone, what else is upgraded besides new features?**

- a) Security Fixes.**
- b) Digital Newspapers Apps.**
- c) Social media Apps.**

8.



**When is it 100% safe to  
use Free WiFi.**

- a) Only at home.**
- b) All the time.**
- c) Never.**

**9.**



**GDPR is a European Union law designed to protect....**

- a) Internet Security.**
- b) Use of local languages on the Internet**
- c) Data and Privacy.**

**10.**



**How can I unblock the mobile in the case I've erroneously typed the PIN code more than 3 times?**

- a)** Call your mobile company, they should be able to provide the PUK.
- b)** There's not option to unblock your mobile.
- c)** Just update device.

**11.**



**What's the code used to unblock your mobile when you have entered the PIN erroneously more than 3 times?**

- a) PASS**
- b) PUK**
- c) PIK**

**12.**



**The mobile phone screen starts to move around on its own and click on things on your desktop. What do you do?**

- a) Turn off the mobile and send it to a trusted security professional**
- b) Reset the mobile and everything will work again**
- c) Install an anti-virus**

**13.**



**An email from your boss asks for the name, addresses, and credit card information of the company's top clients. The email says it's urgent and to please reply right away. You should reply right away.**

**True**

**False**

**14.**



**If you fall for a phishing scam, what should you do to limit the damage?**

- a) Delete the phishing email.**
- b) Unplug the computer. This will get rid of any malware.**
- c) Change any compromised passwords.**



**15.**



**If you get an email that looks like it's from someone you know, you can click on any links as long as you have a spam blocker and anti-virus protection.**

**True**

**False**



DANGER

**1.**

**You are online searching for a new cake recipe. A chef offers you to send a free recipe book if you give him your email address. What do you do?**

- a) I search on YouTube, if there is a video of the chef talking about this book, I accept.**
- b) I check if the chef has a Facebook page. If so, I accept.**
- c) I type the name of the book into a reliable website and check if this is a legitimate offer.**

## **2.**

**What is a browser cookie?**

- a) A type of phishing scam**
- b) A plug-in that allows you to view special types of web content**
- c) A small piece of data that tracks your preferences on different websites**

**3.**

**What is the average life of  
a mobile phone?**

- a) 6 months.**
- b) 18 to 24 months.**
- c) Has no expiration.**

**4.**

**You want to watch a movie on Netflix with your favourite actor (Keanu Reeves). How do you find one?**

**a) I ask my granddaughter because she knows so much.**

**b) I check the TV program if there are any movies with him.**

**c) I start Netflix and put "Keanu Reeves" into the search field.**

**5.**

**Your nephew sends you an email with pictures from his last birthday.**

**You want to protect the pictures from the wrong eyes. How do you accomplish that?**

- a) I put the pictures into my Facebook album**
- b) I save them into a folder on my computer**
- c) I save them on an USB stick**

**6.**

**You want to find an old school friend with a quite common name. You know that she is a teacher now, but changes schools frequently. How do you look for the most recent one?**

**a) I get a list of all the schools in town and call them one by one**

**b) I search on YouTube**

**c) I type her name in quotation marks followed by her last know location and then filter the results for the last two years**



**7.**

**You need a new washing machine and are looking for the most cost-efficient device. What comparison site do you use to compare different models?**

- a) I take one of the comparison sites, because they are all the same**
- b) I take one that I know I can trust**
- c) I use the product comparison on Amazon**

**8.**

**You have searched for a doctor in your town. The next day you see an advertisement for Aspirin. How could you avoid this use of your data?**

- a) use a tablet instead of a computer**
- b) use another search engine (e.g. DuckDuckGo)**
- c) delete my search history in the browser**

**9.**

**You want to find news about an event in your town. Google can help you find what happened by:**

- a) selecting my language as the search language**
- b) restricting the search to the last 24 hours**
- c) clicking on the first result because Google will always put the best result on top**

**10.**

**Show me  
a browser where you can  
search anonymously?**



DANGER

**1.**

**Which program supports  
the global positioning  
system and shows the  
optimal route to the  
chosen destination?  
Choose an icon!**

**2.**

**Which icon indicates a program that uses extensive collaboration tools - video meetings, team chats, webinars, etc.?**

**3.**

**Which icon indicates the program that would be most suitable for presenting illustrated topics - creating presentations?**



**4.**

**Your mobile phone  
storage capacity is  
overloaded, what do you  
have to do, choose the  
icon to help you!**

**5.**

**There are things you want to buy and also sell on the Internet. What digital platforms would you think is appropriate for this action?**

**6.**

**Which icon indicates the program that would be most suitable for performing calculations and statistics?**

**7.**

**Which icon indicates a program that can create professional and versatile charts that simplify complex information?**

**8.**

**You are in Rome CIA airport and trying to go to Giulianova, you do not know how to get there. What will you use to find directions to your destination?  
Choose an icon!**

**9.**

**Your text messages  
are visible**

**a) Your text messages  
are visible**

**b) Your conversations  
and emails are visible  
to hackers**

**c) Your passwords and  
usernames are  
exposed**

## 10.

**What is "grooming"?**

- a) When someone likes your pics on social media.**
- b) When someone tries to become your friend online by flattering you and pretending they care.**
- c) When someone threatens you online.**



DANGER



**1.**

**The PIN of your mobile phone is something that's coming with the...**

- a) Mobile phone.**
- b) SIM card.**
- c) I don't know.**

## **2.**

**In terms of cyberattack,  
what's Phishing?**

- a) Is a method of fraudulently attempting to obtain sensitive information such as usernames, passwords and credit card details.**
- b) Phishing attacks often work by disguising malicious communications as originating from a trustworthy entity, like a bank or phone provider.**
- c) Both are correct responses.**

### **3.**

**When you get identified in your mobile, nowadays, some devices use the facial recognition. It's working perfectly, however it's known this way of Authentication has a breach...**

- a) A picture of your face could be used.**
- b) Someone can take the mobile when you're sleeping and use your face.**
- c) I don't know.**

**4.**

**Why are Smart Phones working perfectly the first day but stop working perfectly after some years?**

- a) It's said that the planned obsolescence forces you to buy new devices.**
- b) Because it's not fancy at all to have an old mobile.**
- c) I don't know.**

**5.**

**Can a hacker get access to your device if you use Free WiFi.**

- a) Yes.**
- b) Never.**
- c) Not in Burger King.**

**6.**

**What is the tool that can  
keep you safe when using  
Free WiFi?**

- a) Virtual Private Net.**
- b) Virtual Private Name.**
- c) Very Public Network.**

**7.**

**You're using public transport and your daughter asks for your credit card PIN as she must make a payment.**

**a) That's not an issue, I'll tell her the PIN of the credit card.**

**b) Not an issue, I'll hide the screen of my mobile and send her the PIN via Watshapp. Once read, I'll delete the message sent.**

**c) I'll call one of my colleagues, tell him the PIN and ask him to send it via Watshapp to my daughter.**

**8.**

**Criminals access someone's computer and encrypt the user's personal files and data.**

**The user is unable to access this data unless they pay the criminals to decrypt the files. This practice is called:**

- a) Spam**
- b) Botnet**
- c) Ransomware**



**9.**

**What kind of cybersecurity risks can be minimized by using a Virtual Private Network (VPN)?**

- a) Use of insecure Wi-Fi networks**
- b) Key-logging**
- c) Phishing attacks**

**10.**

**When shopping online,  
which payment method is  
generally safest?**

- a) Credit cards**
- b) Bank transfers**
- c) Direct wire transfers**

"Funded by the European Union. Views and opinions expressed are however those of the author(s) only and do not necessarily reflect those of the European Union or the European Education and Culture Executive Agency (EACEA). Neither the European Union nor EACEA can be held responsible for them."



# Co-funded by the European Union



## **Creative Commons Attribution-ShareAlike 4.0 International**

This license requires that reusers give credit to the creator. It allows reusers to distribute, remix, adapt, and build upon the material in any medium or format, even for commercial purposes. If others remix, adapt, or build upon the material, they must license the modified material under identical terms.

**BY:** Credit must be given to you, the creator.

**SA:** Adaptations must be shared under the same terms.